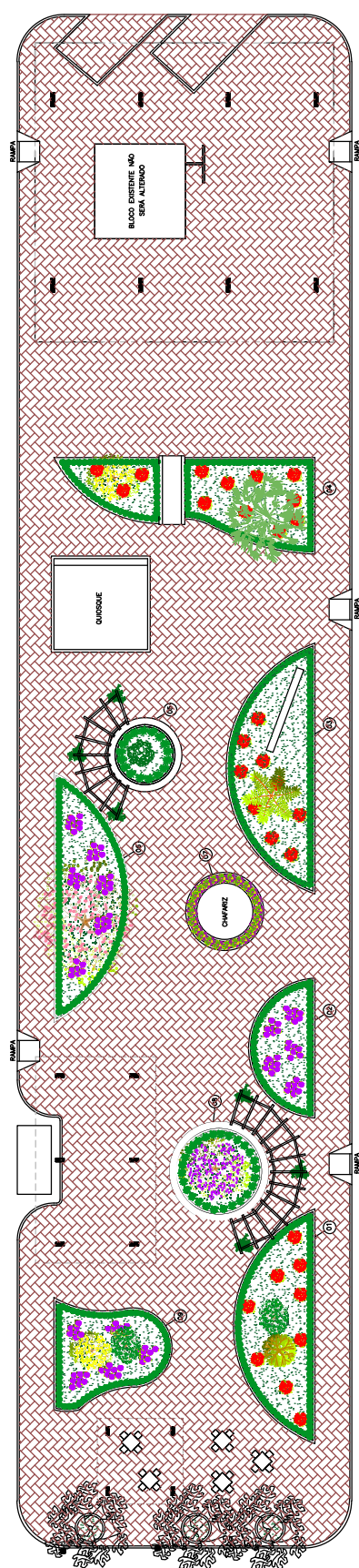


PLANTA BAIXA EXISTENTE – PAISAGISMO – RETIRAR/REALOCAR
SEM ESCALA



PLANTA BAIXA - PAISAGISMO
ESC 1/100









SÍMBOLO	NOME BOTÂNICO	NOME POPULAR	QUANTIDADE
	ADONIDAEUS	ASAPATO	115 UNO
	CLUSIA FLAMMULENS	CLUSIA	538 UNO
	GAZANIA REGENS	GAZANIA	35 UNO
	LIORDE MUSCARI	BARBA DE SERPENTE	25 UNO
	PETUNIA-ATRENSA	PETUNIA	45 UNO
	ANTHODON LEPTOPUS	AMOR-AMARILHO	6 UNO
	JACARANDA MANGUEIRA	JACARANDA MIROSO	1 UNO
	HAEMODONTIUS ALBUS	PIE AMARELO	2 UNO

Diagrama de 10 tipos de plantas ornamentales:

- ROSA, EXISTENTE
- PALESTRA, EXISTENTE
- PIE, EXISTENTE
- PALMERA AZUL, EXISTENTE
- PAU BRASS, EXISTENTE
- MEDSA, EXISTENTE
- CASAHUANA, EXISTENTE
- FLAMBOYANT, EXISTENTE

DES.: AS MUDAS DE PETÚNIA DEVERÃO SER 15 ESPÉCIES NA COR ROXA, 15 ESPÉCIES NA AMARELA E 15 NA COR VERMELHA. DEVERÃO SEREM PLANTADAS NO CANTEIRO 07 INTERCALANDO AS TRÊS CORES.

OBS.: AS MUDAS AMOR-AGARRADINHO DEVERÃO SER PLANTADAS RENTES AOS PILARES DOS PERGOLADOS, CONFORME INDICAÇÃO EM PLANTA BAIXA